

ITEM: CYCLE ROUTE – A4, MAIDENHEAD

Report Author: Gordon Oliver **Position:** Principal Transport Policy Officer
Telephone: 01628 796097 **Email:** gordon.oliver@rbwm.gov.uk

1. Purpose of the Report

- 1.1 This report provides an update on the proposed cycle route along the A4 between Maidenhead Bridge and the town centre.**

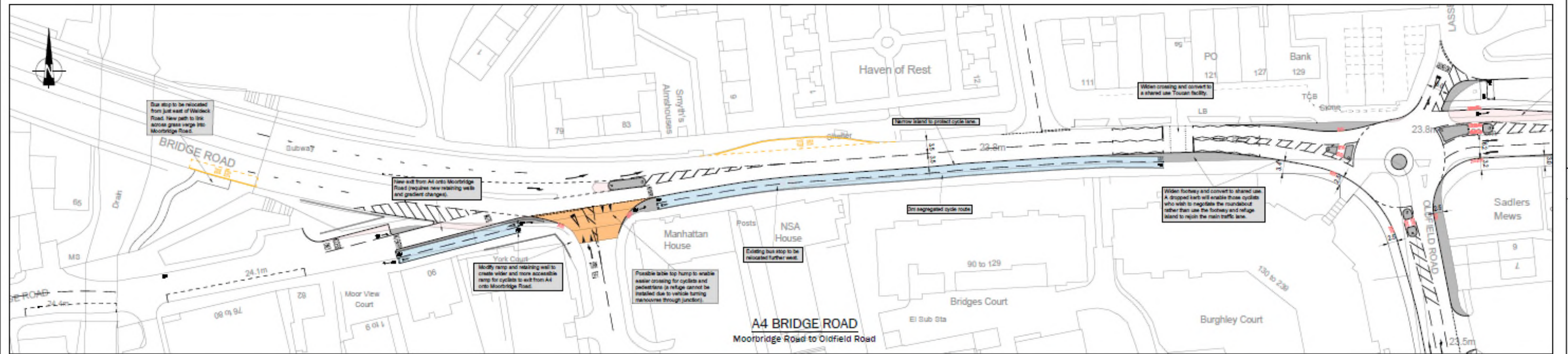
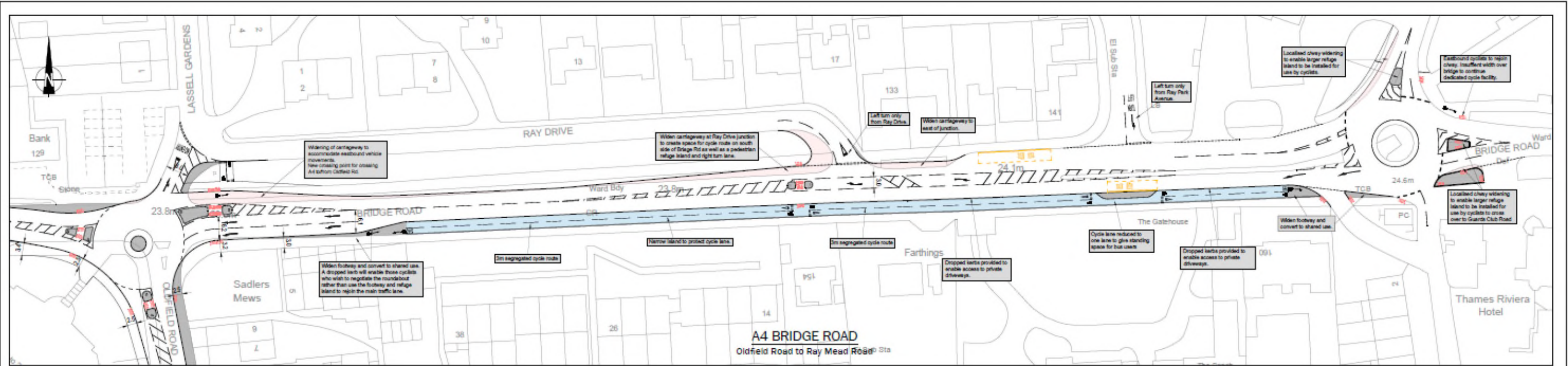
2. Supporting Information**Background**

- 2.1 At the Maidenhead Cycling Workshop on 6th November 2013, the need for a cycle route to connect the town centre to the Riverside area of Maidenhead was identified. A draft scheme was subsequently prepared, which was presented to the Cycle Forum on 05 March 2014.
- 2.2 Members of the Cycle Forum raised some concerns about the proposed design, so a dedicated workshop was arranged to capture all issues relating to the scheme and to agree how the design could be amended to address these issues.
- 2.3 Following the workshop, the cycle route was revised from a two-way, off-carriageway, segregated cycleway on the south side, to accommodate two wide, on-carriageway cycle lanes with bus stop bypasses. Provision has been made for cyclists within a proposed slip road from the A4 into Moorbridge Road, and there will be a link from the existing cycle route across Town Moor. Options were investigated for widening the subway at the end of Moorbridge Road so that cyclists could cross the A4 without dismounting. However, the cost was found to be prohibitive, even for a reduced scheme that only widened the approach ramps to the subway.
- 2.4 The layout for the A4 cycle route scheme is currently being revised to accommodate agreed changes in the vicinity of the Miller Homes development and it is hoped to go out to consultation on the final scheme in late January / early February.
- 2.5 The scheme is intended to form part of a longer-distance cycle route linking Maidenhead and Slough. The Royal Borough and Slough Borough submitted a joint bid to the Thames Valley Berkshire Local Enterprise Partnership (LEP). The Royal Borough wanted to deliver its part of the scheme in 2015/16 to tie in with the Stafferton Way Link Road project, but the LEP has only given conditional approval for funding 2016/17 subject to a successful business case.
- 2.6 An internal funding bid was submitted with a view to constructing the scheme in 2015/16 as originally planned, but this has not been successful. The Council is therefore working with Slough Borough Council to develop a business case for the scheme in order to secure the conditional funding that has been allocated by the LEP. This will be presented to the Thames Valley Berkshire Local Transport Body for approval in July 2015.
- 2.7 Elements of the scheme will be progressed in the interim period. For example, the Moorbridge Road slip road and Maidenhead Bridge Gateway will be progressed in 2015. These schemes will be designed so as to facilitate deliver of the cycle route scheme.

- 2.8 It should be noted that Buckinghamshire County Council has been working on a proposal for a cycle route along their section of the A4 between Maidenhead Bridge and the boundary with Slough Borough. They have been successful in securing funding through the Thames Valley Buckinghamshire LEP and are looking to progress their scheme in a similar time frame.
- 2.9 The three local authorities are meeting regularly and are setting up a document sharing system in order to facilitate joint working. It has been agreed that once complete, the scheme will be promoted jointly across the three local authorities.

3. Recommendation

- 3.1 It is recommended that members of the Cycle Forum note progress with the scheme.**




Reproduced from the Ordnance Survey Mapping with the permission of the Controller of Her Majesty's Stationery Office Crown Copyright ©. Unauthorised reproduction infringes Crown Copyright and may lead to prosecution of civil proceedings. Royal Borough of Windsor and Maidenhead - Licence Number LA086118.

A	Revised as per RBWM comments of 18.12.2013	REM	23.12.13 PDB
Mark	Revision	Drawn	Date Cktd

SCALING NOTE: Do not scale from this drawing. If in doubt, ask.
 UTILITIES NOTE: The position of any existing public or private sewers, utility services, plant or apparatus shown on this drawing is believed to be correct, but no warranty is expressed or implied. Other such plant or apparatus may also be present but not shown. The Contractor is therefore advised to undertake his own investigation where the presence of any existing sewers, services, plant or apparatus may affect his operations.

Drawing Issue Status
DRAFT FOR DISCUSSION

A4 Bridge Road, Maidenhead Bridge to Forlease Road
Outline cycle facility designs
Appendix 1

Client		 Offices throughout the UK and Europe www.peterbrett.com © Peter Brett Associates LLP READING Tel: 0118 950 0765
THE ROYAL BOROUGH OF WINDSOR AND MAIDENHEAD		
Date of 1st issue	Drawn by	
10.12.13	REM	
A1 Scale	Checked by	Drawing Number 29524/001/02
1:500	AR	
Revision		Revision
A		A